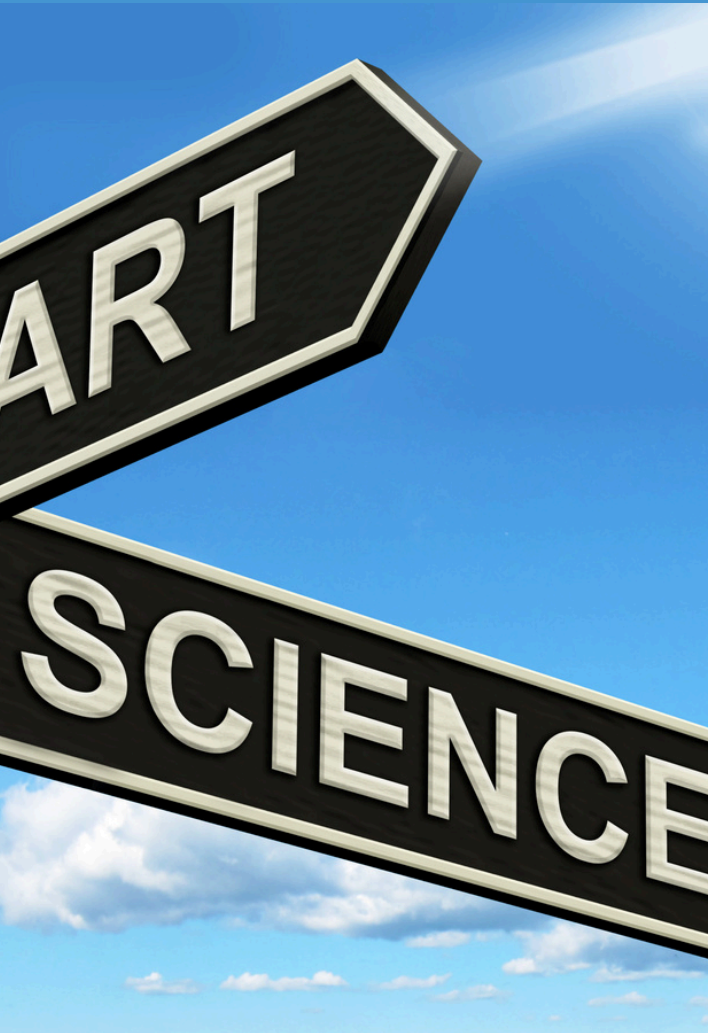


Art & Science Collaborations at Point Blue

A Guiding Framework



Point Blue
Conservation
Science



Overview

Point Blue Conservation Science wishes and intends to proactively and reactively engage with artists in projects/pieces/events that promote and communicate conservation work in ever-evolving, impactful ways. This framework outlines the why, what, who, and how.

Suggested citation: Arata, L., Chadwick, A., Snyder, R., and Gamble, N. 2023. Art & Science Collaborations at Point Blue: A Guiding Framework. V2.0. Point Blue Conservation Science, Petaluma, California.

Front cover: members and associates of San Francisco-based Art+Climate Action and Point Blue biologists in a discussion circle during a 2023 visit to Point Blue's Palomarin Field Station.
Credit: Devon Bella, Art+Climate Action.

About Point Blue

Point Blue is a California-based environmental non-profit organization founded in 1965 with a mission to advance the conservation of birds, other wildlife, and ecosystems through science, partnerships, and outreach. Our 160 scientists work on the ground with partners from the Sierra to the sea, across the Pacific Flyway from Alaska to Chile, and as far as Antarctica to reduce the impacts of climate change, habitat loss, and other environmental threats while developing nature-based solutions to benefit both wildlife and people.



Point Blue
Conservation
Science



Advisory Committee

A diverse group of people who practice art in appreciation and support of nature and its role in healthy communities



Anne Chadwick

Point Blue Board
Chair/Art & Science
Advisory Committee
Chair



Lishka Arata

Point Blue Communications
Manager/Art & Science
Initiative Lead



Ashley Bloxham

Marketing
Professional/Art &
Science Advisory
Committee Support

Art & Science Collaboration Leadership



Vision

As a result of our art and science collaborations, efforts, and projects, the world will become a more inspiring and healthy place for all living organisms. We will see more vibrant, inclusive, and effective conservation solutions blossom and ripple out locally, nationally, and globally. We will see greater understanding and action to address the challenges of climate change and biodiversity loss.

Why Art & Science?

We believe that if you fall in love with nature, you will protect it. We also know that art is an effective way to fall in love with nature. We hypothesize that by intentionally merging two curiosity-driven ways of knowing—art & science—that we can communicate, formulate, and engage in more effective and longer-lasting solutions.

There are not enough people engaged in solutions to climate change and biodiversity loss. We need to employ new creative approaches in order to increase the pace and scale of change needed to shift course towards a healthy future for all.

People are both the problem and the solution to climate change, biodiversity loss, and other environmental threats. But the challenges of climate change and biodiversity loss can oftentimes feel overwhelming and too complex to address. Art can provide a vehicle for understanding science, complex issues, expressing challenging feelings, and supporting empowered action in ways that are transformative. We think bringing artists and scientists together to work collaboratively on solutions to environmental challenges is ripe with possibility for large-scale positive impact.



Our Goals



Through art and science collaborations, we seek to increase the number of people who:

- understand the value of nature and their relationship to it,
- know the challenges we face when nature is destroyed or threatened, and
- are actively participating in solutions to climate change and biodiversity loss.

We also seek to increase the depth of understanding and the impact of climate and biodiversity solutions.



Key Audiences

The key audiences we hope to engage with these efforts include:

- New supporters and collaborators of our conservation work (with active intention and actions that are inclusive of people who represent the racial, age, gender, ability, orientation, economic, etc. diversity of California and other areas where we do work)
- Artists and collaborators who want to work together to address climate change and/or environmental conservation and justice challenges
- Artists and Collaborators who have the ability to influence and engage at a large geographic and demographic scale

Ways of Collaborating

Point Blue Conservation Science intends to proactively engage with artists in projects/pieces/events that promote and communicate conservation work in ever-evolving, impactful ways. Examples could be artist in residence programs, including an artist on a conservation planning team, or integrating art-centered ways to communicate science and conservation.



We also intend to say yes to as many requests from artists as we can, using this framework as a guide.

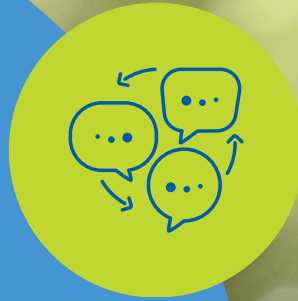


Making it Happen

Our Conservation Art & Science Advisory Committee provides ongoing support and guidance for impactful art & science projects and efforts, as well as a way to get involved with conservation art & science efforts.

Project leads and committee members work collaboratively to identify funding to fairly compensate artists and support project teams.

Project leads track and communicate lessons learned and conservation impact in multiple ways.



Collab with Us!

Lishka Arata, Communications Manager
Point Blue Conservation Science
707-781-2555 ext.354
larata@pointblue.org
www.pointblue.org
3820 Cypress Drive #11,
Petaluma, CA 94954



Thank You!

"Sciences provide an understanding of a universal experience, Arts are a universal understanding of a personal experience... they are both a part of us and a manifestation of the same thing... the arts and sciences are avatars of human creativity"

-Mae Jemison, American engineer, physician, and former NASA astronaut



Point Blue
Conservation
Science